

750 Series Hammer Union Pressure Transducer

The 750 Series Hammer Union Pressure Transmitter & Transducer is engineered to provide precise pressure measurements up to 20,000 psi (1500 bar) and operates across a wide temperature range from -40 to 176°F (-40 to 80°C).

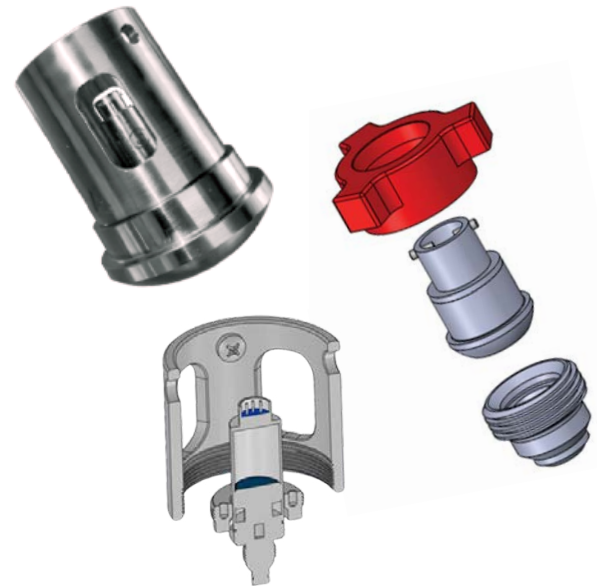
Built for the toughest conditions, it ensures safety and compliance in hazardous environments, with intrinsic safety features and certifications including ATEX and IECEx. Its rugged construction offers exceptional resistance to shock and vibration, making it a reliable choice for demanding industrial applications.

Industry Challenges

- ▶ Exposure to installation shocks up to 10,000 g
- ▶ Shifts in output during installation
- ▶ Shock and vibration during operation and transport
- ▶ Pulsations generated by the Triplex Pump
- ▶ High cyclic loads
- ▶ Viscous, highly abrasive sand slurry

Barksdale Solution

- ▶ Shock and vibration resistant
- ▶ Rugged and corrosion resistant design and materials
- ▶ Pressure measurements up to 20,000 psi
- ▶ Hazardous Location approvals



Industries

- ▶ Oil & Gas Exploration & Production
- ▶ Refining, Petrochemical & Chemical

Applications

Drilling Applications

- ▶ Mud pumps/mud logging
- ▶ Choke & Kill
- ▶ Blowout preventers (BOP)
- ▶ Mud pulse detection

Well Service

- ▶ Fracking
- ▶ Cementing
- ▶ Acidizing
- ▶ Coiled tubing

Features

- ▶ Reliable and accurate pressure measurement
- ▶ Accuracy – $\leq \pm 0.25\%$ of span
- ▶ Pressure ranges up to 20,000 psi (1,500 BAR)
- ▶ Working temperature -40 to 176°F (-40° to 80°C)
- ▶ Supply voltage 11 to 28VDC
- ▶ Output: 4 to 20mA (2 wires connection)
- ▶ Process Connection Hammer Union 1502
- ▶ Designed for harsh environments

Certifications

- ▶ ATEX and IECEx
 - ▶ Certified Zone 0 and Zone 20
 - ▶ Category 1
 - ▶ II1G Ex ia IIC T4 Ga
 - ▶ II1D Ex ia IIIC T200 107 C Da
- ▶ Marine - Type approval Lloyd's Register
- ▶ North America (pending) - Intrinsically Safe
 - ▶ Class I, Div1, Groups ABCD

